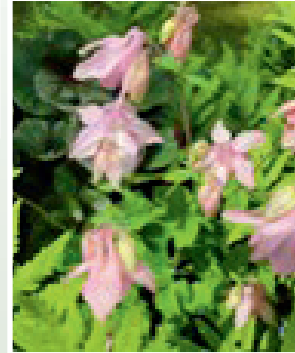
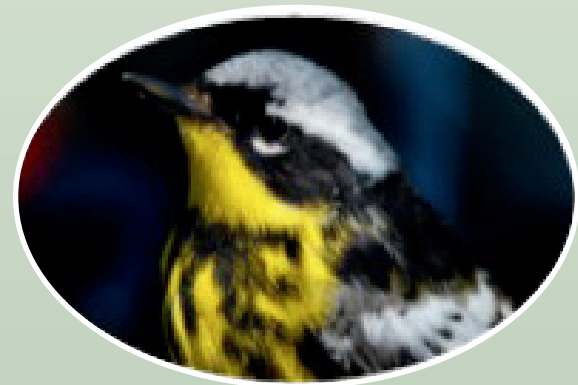


# History

Our story begins in 1809 when Dr. Robert Rose purchased 100,000 acres that later became a large part of Susquehanna County, Pennsylvania. Over the years much of this land passed out of family holdings, but a portion was preserved by a descendant, Edward L. Rose, who was committed to maintaining the rural character of the area. In 1987, over 300 acres of that original estate in Silver Lake Township were sold to a group of citizens pledged to continue his tradition of concern for land protection. The Edward L. Rose Conservancy was formed to protect that land, preserve natural habitat and increase public awareness through research and outreach programs.

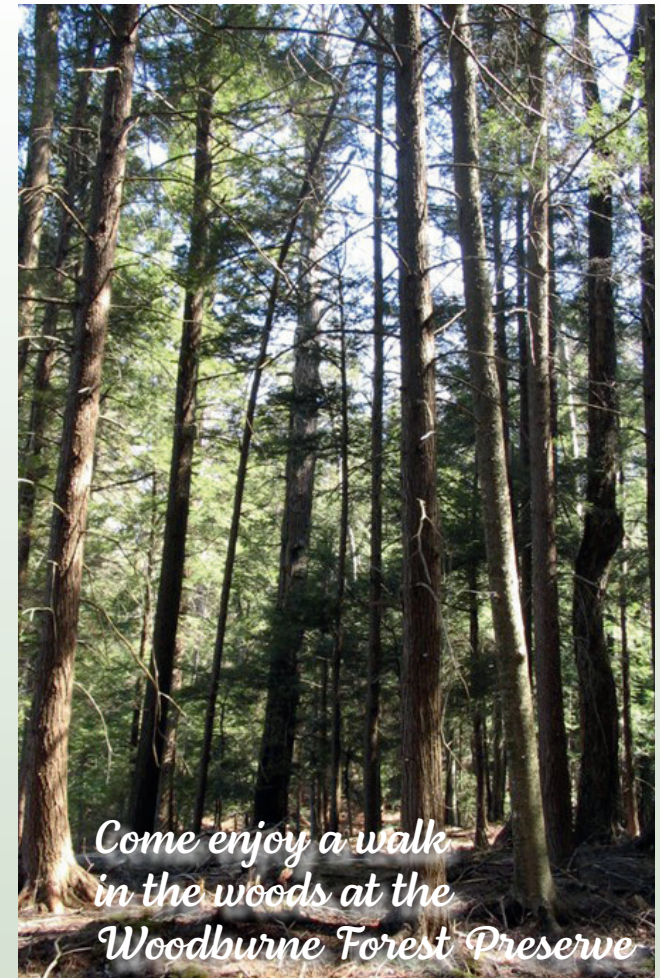


## Become a Member

Our members receive invitations to all events and educational programs, access to all of the trails and facilities, a voice in the affairs of the organization and an opportunity to volunteer in contributing to their community. Basic membership is only \$50 per year. Go to [elrose.org](http://elrose.org) to join in support of local conservation efforts.

Your membership and donations help support research, easement monitoring, land protection, and educational programs. Your gifts of land and conservation easements help to conserve water, land, wildlife, and rural beauty for future generations.

**Join us today: [www.elrose.org](http://www.elrose.org)**



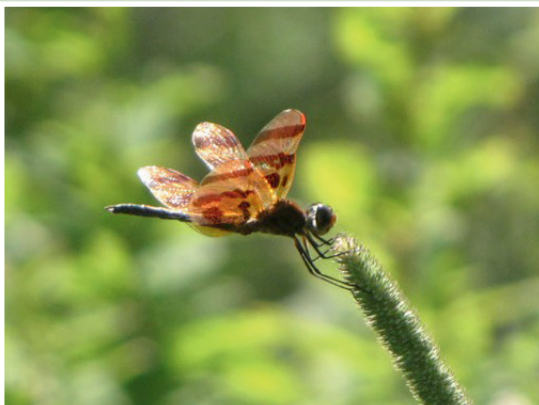
## Edward L. Rose Land Conservancy

---

Serving Northeast  
Pennsylvania  
and the Southern Tier  
of New York State

# Our Preserves

The Conservancy owns and manages four preserves in Susquehanna County, the Woodburne Forest Preserve and the Greenwood Sanctuary in Dimock Township and the High Point Preserve and Longford Lake property in Silver Lake Township. Over a thousand acres of forests, fields, wetlands, streams and pond resources are protected within the boundaries of these properties. All preserve trails are open to members year-round and to the public during scheduled programs. The 7 miles of trails at the Woodburne Forest are fully open to the public. Regular nature programs are presented at the Woodburne Pavilion along with guided hikes through the old growth forest areas and wetlands.



## Protecting land, it's what we do!

The Edward L. Rose Conservancy permanently protects over 2,000 acres of land by working with land owners through land donations or conservation easements.

A conservation easement is a powerful, legal tool for land protection. It is a voluntary agreement that limits development on all or a portion of property for conservation or agricultural purposes while keeping the property in the landowner's ownership and control. Every easement is unique and tailored to a particular property and to the goals of the landowner and the conservation organization. The easement remains with the land, and applies to both present and future owners.



## Tax Benefits

A conservation easement may confer significant tax benefits to the donor, including income taxes, estate taxes, and property taxes. We can assist you in finding the most appropriate land protection strategy for you while financially benefiting you and your family for years to come.

## You can help!

The Edward L. Rose Conservancy is supported through annual membership dues, bequests, gifts of land and other donations. All memberships and gifts qualify as tax deductible charitable contributions.

**To become a member,  
visit our website:  
[www.elrose.org](http://www.elrose.org)**